

SCHOOL ASSISTANT ASSOCIATION, CHITTOOR.
MODEL NMMS EXAM – 2016

Directions:

Questions (1 to 10):

In the number series given below, one number is missing. Each series is followed by five alternatives: (1),(2),(3),(4),(5). One of them is the right answer. Indicate it as per the instructions.

1. 7, 10, 8, 11, 9, 12,
(1) 7 2) 10 3) 12 4) 13 5) 15
2. 36, 34, 30, 28, 24,
(1) 20 23 22
(2) 26
(3) 25
3. 53, 53, 40, 40, 27, 27,
(1) 12
(2) 53
(3) 27
(4) 21
(5) 14
4. V, VIII, XI, XIV,
(1) IX
(2) XXIII
(3) XV
(4) XVII
(5) XVI
5. 664, 332, 340, 170,, 89
(1) 85
(2) 97
(3) 178
(4) 109
(5) 129
6. 6 10 14 18 22 26 30
(1) 36 40
(2) 33 37
(3) 38 42
(4) 34 36
(5) 34 38
7. 2, 15, 4, 12, 6, 8,, 3
(1) 8
(2) 9
(3) 7
(4) 6
(5) 0
8. 120, 99, 80, 63, 48,
(1) 38
(2) 40
(3) 35
(4) 39
(5) 33
9. 589654237, 89654237, 8965423, 965423, ..
(1) 58965
(2) 65423
(3) 89654
(4) 96542
(5) 96545
10. 22, 21, 23, 22, 24, 23,
(1) 22, 23
(2) 23, 22
(3) 25, 23
(4) 24, 25
(5) 25, 24

Directions:

Questions (11 to 15): These are based on letter analogy. There are two pairs of letter combinations in each question. The first (left hand side) pair has some relationship between its members. In the second pair, one member is missing. Find this out from the answers (1),(2),(3),(4),(5) such that this pair has a similar relationship as the first pair. Indicate your answer as per the instructions.

11. WFB : TGD :: QHG : ?
(1) INI
(2) RIN
(3) NII
(4) NIR
(5) IIN
12. FAG : GAF :: OBP : ?
(1) PBO
(2) BPO
(3) PBQ
(4) QBP
(5) BPQ
13. ELFA : GLHA :: MLNB : ?
(1) QBPL
(2) QLPB
(3) OLPB
(4) OBPL
(5) OLBP
14. SCD : TEF :: IJT :: ?
(1) LKU
(2) KUL
(3) LUK
(4) KLU
(5) ULK
15. LINK : SNIR :: KING : ?
(1) QINS
(2) QNIU
(3) UNIQ
(4) UINQ
(5) UIQN

Directions:

Questions (16 to 25) :

In the following questions, letters/letter groups are arranged in a particular order with some underlying criterion. Study the order and choose the answer from the alternatives to fill the gaps. Indicate the right answer as per the instructions.

16. SCD, TEF, UGH,, WKL
(1) WJI
(2) VJI
(3) VIJ
(4) WIJ
(5) JIV
17. TG, QH, NI,
(1) JK 2) KJ 3) MK 4) OK 5) JO
18. DEGK, CDFJ, BCEI,
(1) ABDH
(2) DBHA
(3) AHDB
(4) ADBH
(5) DABH

19. ABC,EBF,HBI,.....

- (1) GHB
- (2) GBH
- (3) BLK
- (4) GBL
- (5) KBL

20. MO,NP,OQ,.....

- (1) NO
- (2) PR
- (3) RQ
- (4) RS
- (5) PS

21. AZBY,CXDW,EVFU,.....

- (1) GHSW
- (2) FWHS
- (3) WHSW
- (4) GTHS
- (5) GWGS

22. IKMO,JKMP,KMKQ,.....,MMKS

- (1) LMKR
- (2) KMKR
- (3) LKMR
- (4) LMKS
- (5) RMKL

23. NOHG,QRJI,TULK,.....

- (1) WNMW
- (2) NMW
- (3) WXMN
- (4) WXNM
- (5) MNWX

24. CXDW,EYCX,GZBY,.....

- (1) HZAZ
- (2) HAZZ
- (3) AHZA
- (4) HZZA
- (5) HAAZ

25. EVFU,GXHW,IZJY,.....

- (1) LABK
- (2) KLAB
- (3) KYZL
- (4) KBAL
- (5) KBLA

Directions:

Questions (26 to 30):

In each of these questions, five words are given. If they are arranged in the alphabetical order as in the dictionary, find out the word which comes first. Indicate your answer as per the instructions.

26. (1) Admire
(2) Adrift
(3) Adjust
(4) Adroit
(5) Abide
27. (1) Impudence
(2) Immune
(3) Implicate
(4) Immense
(5) Immature

28. (1) Delegate

- (2) Different
- (3) Digest
- (4) Dispose
- (5) Difficult

29. (1) Scorn

- (2) Scroll
- (3) Screen
- (4) Scene
- (5) Seek

30. (1) List

- (2) Link
- (3) Line
- (4) Life
- (5) Live

Directions:

Questions (31 to 40): In the each of these questions, five words are given. Four of them are alike in some way. One word is different from them. Identify the right answer and indicate it as per the instructions.

31. (1) Jeevan Raksha Padak

- (2) Param Vir Chakra
- (3) Padma Bhushan
- (4) Padma Ve Bhushan
- (5) Bharat Ratna

32. (1) Phycology: Algae

- (2) Ornithology :Birds
- (3) Mycology: Fungi
- (4) Biology: Botany
- (5) Cytology:Cells

33. (1)Elephant

- (2) Man
- (3) Hawk
- (4) Seal
- (5) Whale

34. (1) Jaipur

- (2) Manali
- (3) Pahalgam
- (4) Mussorie
- (5) Darjeeling

35. (1)Savanna

- (2) Prairies
- (3) Downs
- (4) Pampus
- (5) Grasslands

36. (1) Exercising

- (2) Sprinting
- (3) Jogging
- (4) Jumping
- (5) Running

37. (1) Dispur

- (2) Leh
- (3) Shimla
- (4) Panaji
- (5) Aizawl

38. (1)Oats

- (2) Grass
- (3) Convolvulus
- (4) Chenopodium
- (5) Amaranthus

39. (1) Table
 (2) Chair
 (3) Cupboard
 (4) Window
 (5) Door
40. (1) Copper
 (2) Iron
 (3) Aluminum
 (4) Carbon
 (5) Sodium

Directions:

Questions (41 to 45):

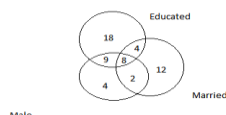
There is a certain relationship between two given words on the one (left) side of ::, while another word is to be found from the five given alternatives, such that similar relation exists in the second pair. Identify the right answer and indicate it as per the instructions.

41. Temperature: Thermometer :: Blood pressure :
 (1) Sphygmomanometer
 (2) Barometer
 (3) Bevameter
 (4) Hygrometer
 (5) Phygomanometer
42. Ballpoint pen : Laszlo Biro :: Fountain Pen :
 (1) James Ritty
 (2) Joseph Aspdin
 (3) Lewis Edson Waterman
 (4) William Sturgeon
 (5) Thomas Edison
43. Taj Mahal : India :: Colosseum :
 (1) Venice
 (2) Germany
 (3) China
 (4) Rome
 (5) America
44. Australia : Canberra :: Afghanistan :
 (1) Iran
 (2) Iraq
 (3) Kabul
 (4) Baghdad
 (5) Ahmedabad
45. Alluminium : Bauxite :: Petrochemicals:
 (1) Ceramics
 (2) Naphtha
 (3) Sodium
 (4) Sulphate
 (5) Petrol

Directions:

Questions (46 to 49): Study the given diagrams carefully and answer the question given below of it.

46. How many male are there, who are married?
 (1) 8
 (2) 9
 (3) 10
 (4) 12
 (5) 6



47. How many persons are educated?
 (1) 18
 (2) 9
 (3) 20
 (4) 30
 (5) 39

48. How many persons are either married or educated?
 (1) 18
 (2) 22
 (3) 52
 (4) 53
 (5) 40

49. How many male are there who are educated but not married?
 (1) 10
 (2) 9
 (3) 8
 (4) 12
 (5) 15

Directions:

Questions (50 to 64):

If in a language (English), A is coded as 1, B is coded as 2, C is coded as 3 and so on, how are the following letter- groups coded in that language? After identifying the right answer, indicate it as per the instructions.

50. GIED
 (1) 9548
 (2) 5478
 (3) 7954
 (4) 7945
 (5) 7845
51. HIDE
 (1) 8945
 (2) 9845
 (3) 7845
 (4) 6854
 (5) 8954
52. HBGGC
 (1) 83772
 (2) 82773
 (3) 82663
 (4) 83662
 (5) 82753
53. AGHECE
 (1) 187545
 (2) 187545
 (3) 178545
 (4) 178535
 (5) 187454
54. CDBEGH
 (1) 432587
 (2) 342578
 (3) 342587
 (4) 524387
 (5) 245873

Directions:

Questions (55 to 59):

If **DANGER** is coded as **123456** and **LINE** as **9835** respectively, how are the following words coded? Identify the right answer and indicate it as per the instructions.

55. ANGLE
(1) 95243
(2) 24395
(3) 25943
(4) 32459
(5) 23495
56. RING
(1) 2345
(2) 4368
(3) 6834
(4) 6348
(5) 4386
57. RANGE
(1) 12345
(2) 62345
(3) 23456
(4) 62354
(5) 32654
58. DRIN
(1) 6831
(2) 1683
(3) 1638
(4) 6218
(5) 1682
59. NEED
(1) 3551
(2) 4551
(3) 5114
(4) 3554
(5) 4554

Directions:

Questions (60 to 69): The following questions are based on simple arithmetic principles. There are five alternatives given under each question. Identify the right answer and indicate it as per the instructions.

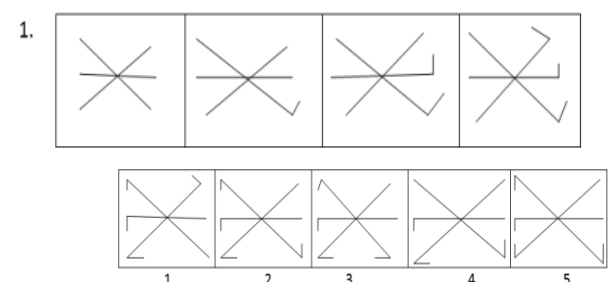
60. $(27-8)^3=?$
(1) 6498
(2) 6948
(3) 6985
(4) 6589
(5) 6859
61. $77777+7777+777=?$
(1) 16331
(2) 86331
(3) 80331
(4) 86313
(5) 86303
62. $7986+?=9246$
(1) 1260
(2) 1206
(3) 1620
(4) 1820
(5) 1280

63. Square root of 81 + square root of x =21
(1) 144
(2) 128
(3) 81
(4) 121
(5) 225
64. $9867-?=1234$
(1) 8366
(2) 8033
(3) 6833
(4) 8633
(5) 8063
65. 12% of 96=?
(1) 11.00
(2) 11.25
(3) 12.00
(4) 11.50
(5) 11.52
66. $0.7*0.0009=?$
(1) 0.00063
(2) 0.0063
(3) 0.00054
(4) 0.063
(5) 0.000063
67. $5/8$ of 924 =?
(1) 590.5
(2) 577.5
(3) 585
(4) 575
(5) 575.5
68. $94.051-78.660=?$
(1) 15.931
(2) 15.319
(3) 15.391
(4) 15.339
(5) 15.399
69. $7272 / 9=?$
(1) 88
(2) 8008
(3) 088
(4) 880
(5) 808

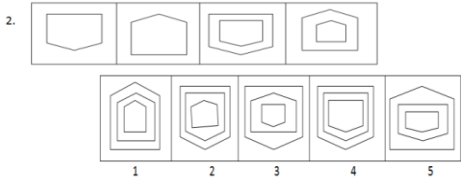
Directions:

Questions (70 to 90): In each of these questions, there are four problem figures (a),(b),(c),(d). Figure (d) is vacant shown by a question mark "?". Figure (b) bears a certain relationship to (a). Similarly one of the answer figure bears similar relationship to (c). Find this out and indicate it as per the instructions.

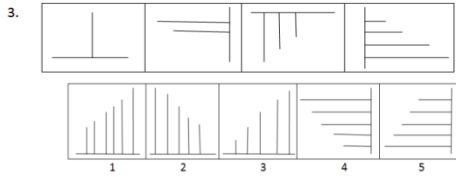
70.



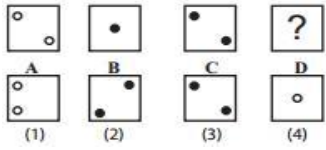
71.



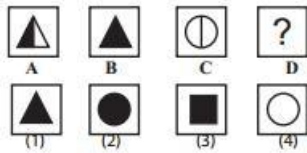
72.



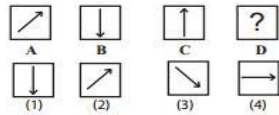
73.



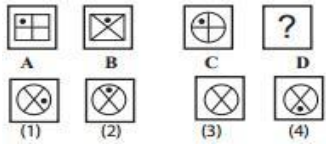
74.



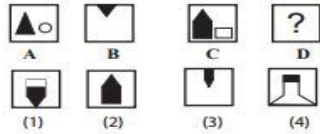
75.



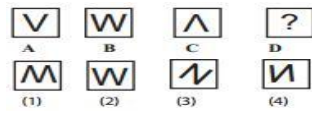
76.



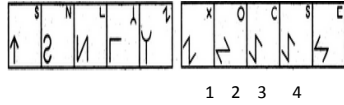
77.



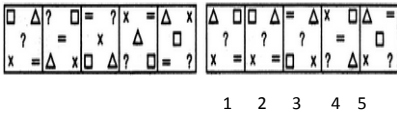
78.



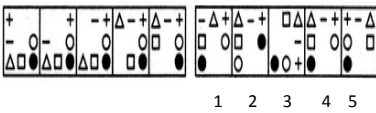
79.



80.



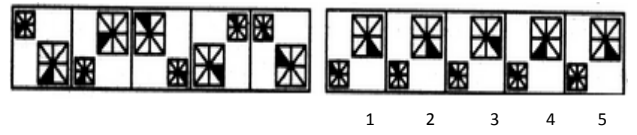
81.



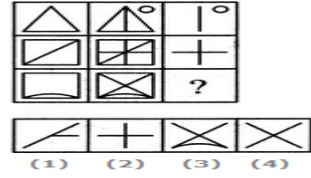
82.



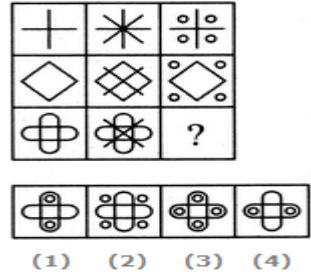
83.



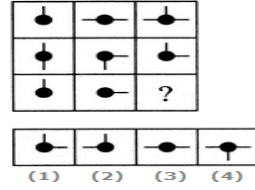
84.



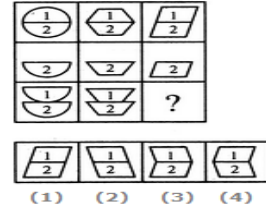
85.



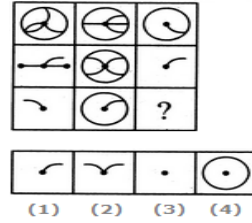
86.



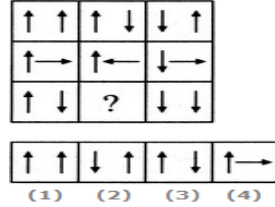
87.



88.



89.



90.

